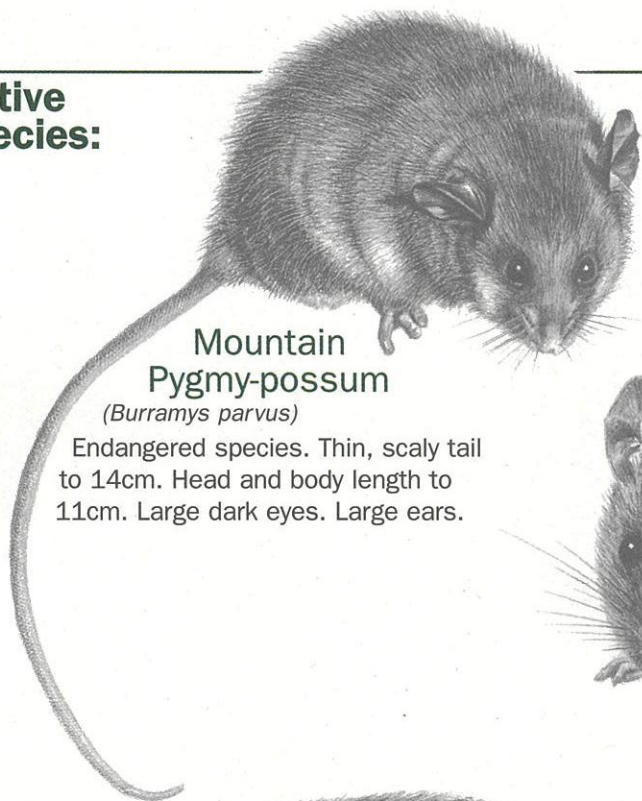


# Most small mammals inhabiting buildings in alpine areas are native.

What to do if you have  
native mammals in  
your building...

## Native species:



**Mountain Pygmy-possum**  
(*Burrhamys parvus*)

Endangered species. Thin, scaly tail to 14cm. Head and body length to 11cm. Large dark eyes. Large ears.

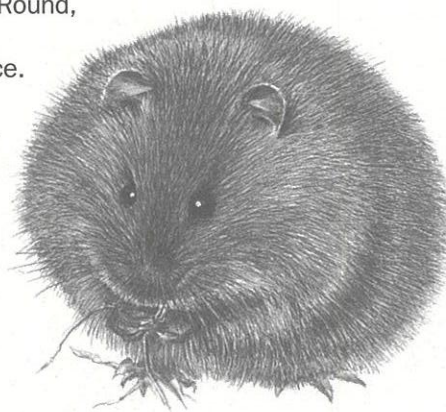
**Southern Bush Rat**  
(*Rattus fuscipes*)

Head and body length to 18cm, tail to 15cm. Typical rat-like appearance. Very common.



**Broad-toothed Rat**  
(*Mastacomys fuscus*)

Threatened species. Thin, hairy tail to 11cm. Head and body length to 16cm. Round, spherical appearance.

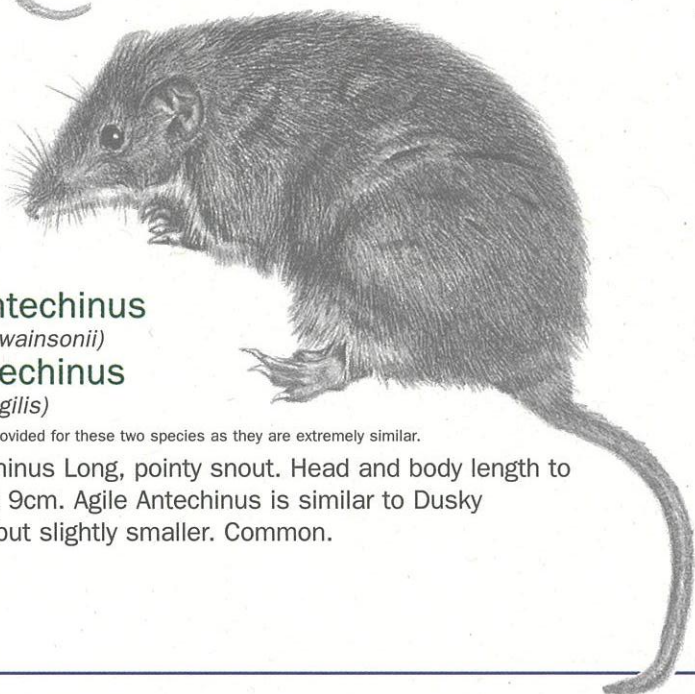


**Dusky Antechinus**  
(*Antechinus swainsonii*)

**Agile Antechinus**  
(*Antechinus agilis*)

Only one image is provided for these two species as they are extremely similar.

Dusky Antechinus Long, pointy snout. Head and body length to 12cm, tail to 9cm. Agile Antechinus is similar to Dusky Antechinus, but slightly smaller. Common.



## Exotic species:

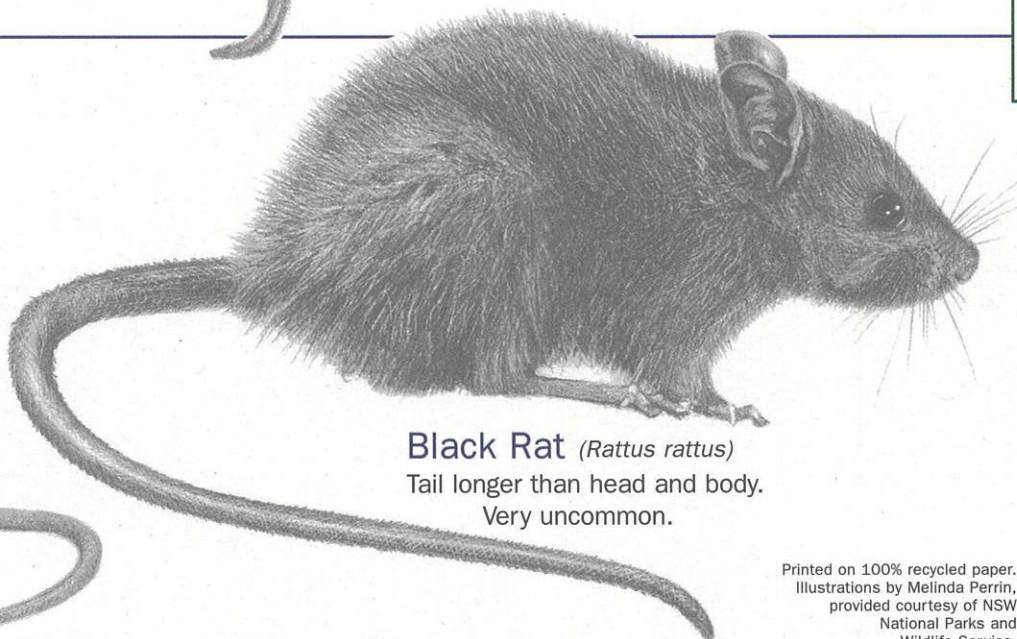
**House Mouse**  
(*Mus musculus*)

Small with broader snout than Antechinus. Very uncommon.



**Black Rat** (*Rattus rattus*)

Tail longer than head and body. Very uncommon.



Printed on 100% recycled paper.  
Illustrations by Melinda Perrin,  
provided courtesy of NSW  
National Parks and  
Wildlife Service.

- Ensure areas where food is kept or consumed are clean. Check behind fridges, in cupboards and beneath dishwashers for food scraps or crumbs;
- Ensure all food is securely locked away in airtight containers where animals are unable to get access to it;
- Block up any entrances, holes or gaps through which animals can access living areas;
- Learn to live with them - they are difficult to remove & are protected by law;
- Do not use snap traps or poison baits.

For more information on these or other animals in alpine areas, or to report a sighting of a Mountain Pygmy-possum or Broad-toothed Rat, contact your local Resort Management Board or Parks Victoria office.